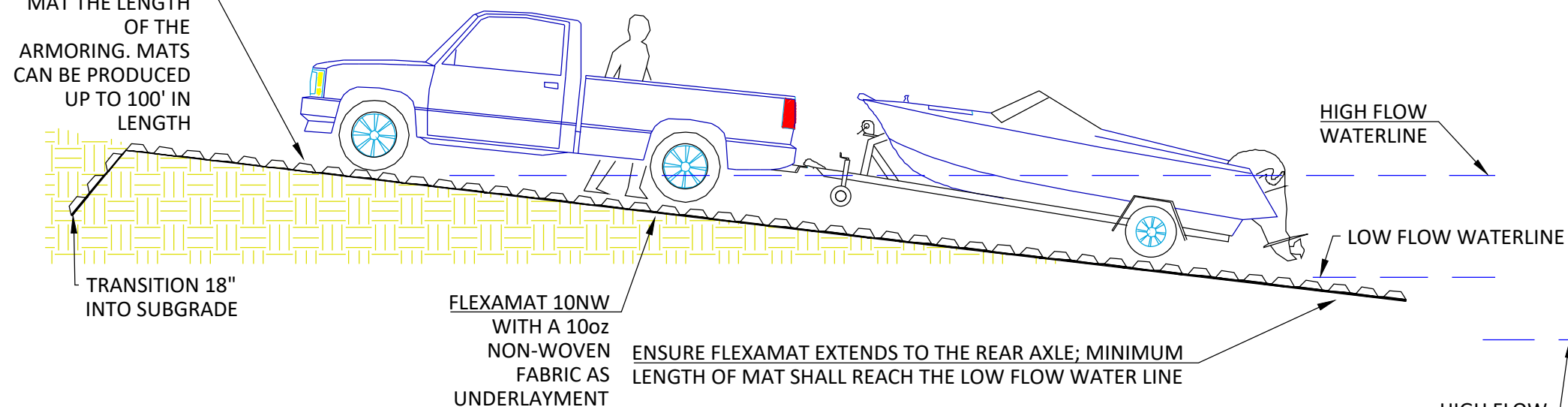
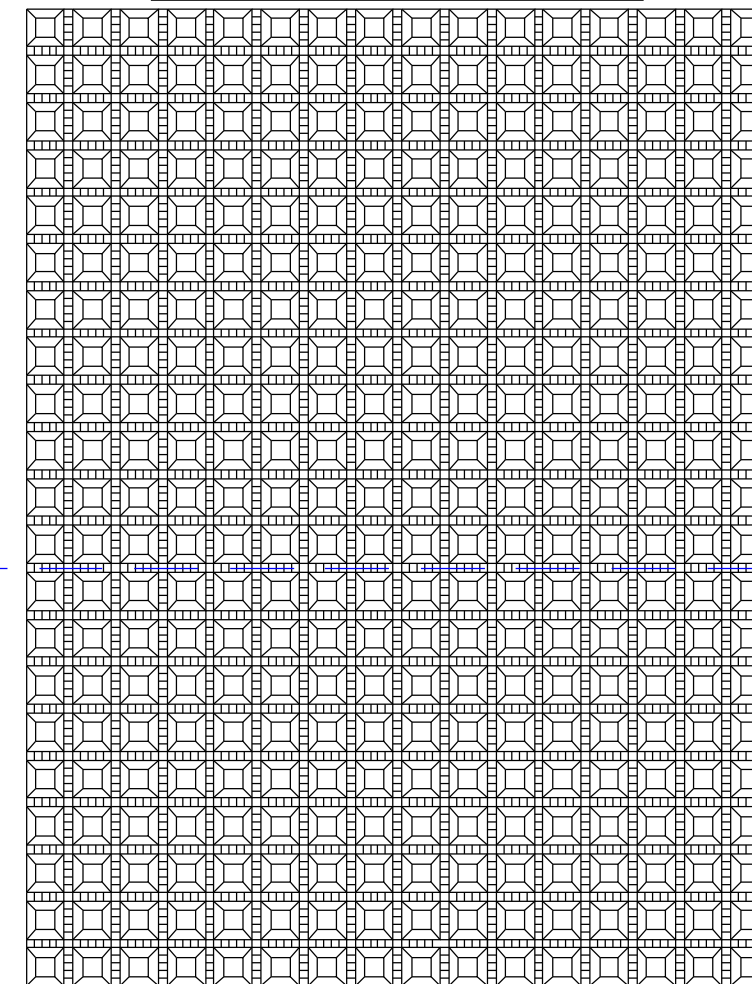


IF POSSIBLE, USE ONE CONTINUOUS MAT THE LENGTH OF THE ARMORING. MATS CAN BE PRODUCED UP TO 100' IN LENGTH

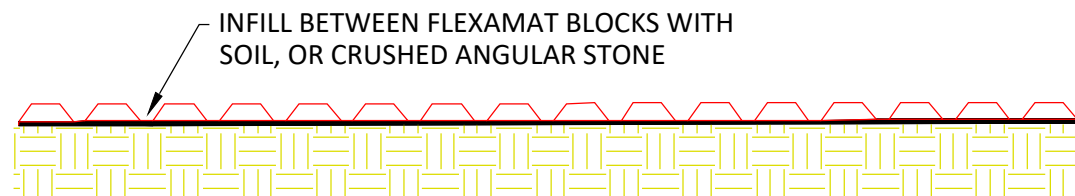
BOAT RAMP ARMORING: PROFILE VIEW



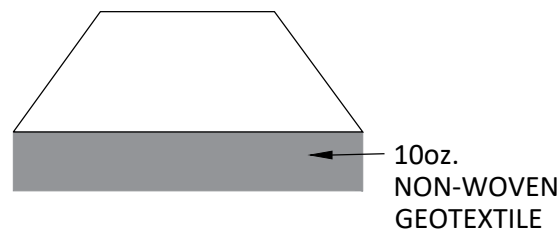
BOAT RAMP ARMORING: TOP VIEW



BOAT RAMP ARMORING: SECTION VIEW



FLEXAMAT 10NW UNDERLAYMENT



FLEXAMAT 10NW - BOAT RAMP LAUNCH ARMORING

CONSTRUCTION NOTES:

1. AN ENGINEER OR MANUFACTURERS REPRESENTATIVE SHALL BE ONSITE FOR THE START OF THE INSTALLATION.
2. ALL SUBGRADE SURFACES PREPARED FOR PLACEMENT OF MATS SHALL BE SMOOTH AND FREE OF ALL ROCKS, STICKS, ROOTS, OTHER PROTRUSIONS, OR DEBRIS OF ANY KIND.
3. FLEXAMAT ROLLS ARE AVAILABLE IN WIDTHS OF 4', 5.5', 8', 10', 12', & 16'. IT IS THE MANUFACTURERS RECOMMENDATION TO UTILIZE THE WIDEST MATS POSSIBLE TO REDUCE AN ABUNDANCE OF SEAMS OR OVERLAPS.
4. AT THE BEGINNING OF THE FLEXAMAT, TRANSITION THE INITIAL LEADING 18" INTO THE SUBGRADE TO SERVE AS AN ANCHOR TRENCH. THE TRENCH SHALL BE FILLED AND COMPACTED WITH SUITABLE FILL OR OTHER (AS SPECIFIED BY EOR).
5. INFILL BETWEEN FLEXAMAT BLOCKS WITH SOIL OR CRUSHED ANGULAR STONE.
 - 5.1. IF INFILLING WITH SOIL, SEED AND LAY STRAW OVER THE FLEXAMAT TO PROMOTE VEGETATION.

MOTZ ENTERPRISES, INC.

Flexamat

(513)772-6689

Info@Flexamat.com

Flexamat.com

